



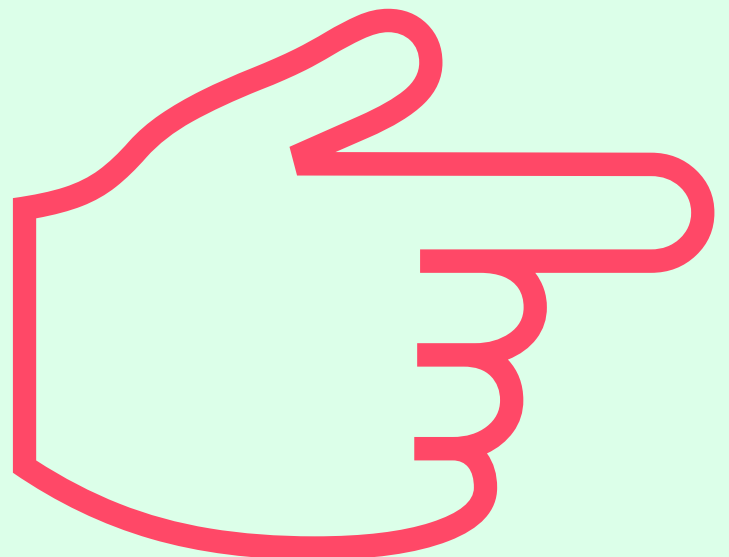
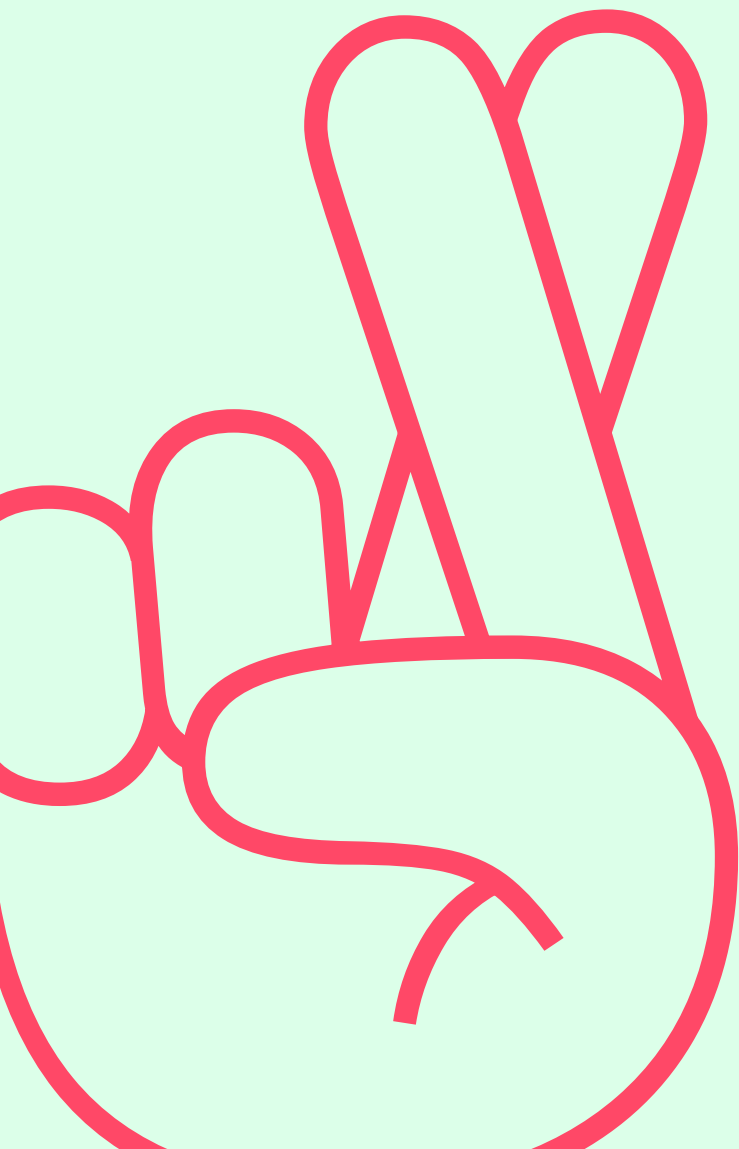
# RECLAIMING HOPE — LOGISTICS

## 0. VENUE LOCATION

FULL ADDRESS  
OF THE SYMPOSIUM VENUE

---

**EPICENTER,  
KOLODVORŠKA POT 10,  
NOVA GORICA, SLOVENIA**



# 1. ACCESSIBILITY



## BY PUBLIC TRANSPORT

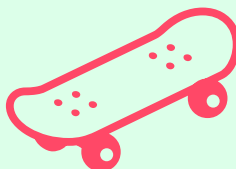
### BY CAR



Here's how to drive from City Hall (Mestna občina Nova Gorica / Mestna hiša) at Trg Edvarda Kardelja 1 to EPICenter at Kolodvorska pot 10, Nova Gorica

1. From the Town Hall on Trg Edvarda Kardelja, head west onto Cesta 27. marca and follow it straight toward the railway station.
2. Continue straight onto Ulica Marcosa, keeping the train tracks on your left as you approach Europe Square (Trg Evrope).
3. At the square, turn left onto Kolodvorska pot, which runs parallel to the railway line.
4. Stay on Kolodvorska pot for just a short distance – EPICenter will appear on your right at Kolodvorska pot 10, right next to Nova Gorica railway station.
5. You'll see a parking area just in front of EPICenter – ideal for visitor drop-off or parking.

### BY FOOT



1. Start at City Hall and head east toward Europe Square (Trg Evrope), which is just minutes away.
2. Once you reach the square (adjacent to Nova Gorica railway station), find Kolodvorska pot, the road running alongside the train tracks
3. Turn right onto Kolodvorska pot and walk east for just a few dozen meters.
4. EPICenter will be on your right at Kolodvorska pot 10, right next to the station building

The entire walk takes about 15 minutes.

If you're starting from Nova Gorica City Hall (Mestna občina Nova Gorica) and want to get to Trg Evrope (Europe Square), here's the best way using local buses:

#### OPTION 1: FREE CITY BUS (NOMAGO)

Nomago operates a free municipal bus service within Nova Gorica for local residents and visitors. ([nomago.si](http://nomago.si))

Check Nomago's local schedules or the "Vozni red Nova Gorica" timetable for exact departure times. ([nomago.si](http://nomago.si))

This free bus passes central locations—very likely including Nova Gorica City Hall—so you can hop on and ride to a stop near Europe Square.

#### OPTION 2: HOP-ON/HOP-OFF TOURIST BUS (FRIDAY & SATURDAY ONLY, SEASONAL)

There's a circular tourist bus available Fridays and Saturdays from May 1 to September 30, with an all-day ticket costing €5 (kids under 10 ride free). ([I feel Slovenia](http://IfeelSlovenia))

This line includes a stop at Trg Evrope among its 10 key attractions around the city—including Edvard Rusjan Square, Rafutski Park, and others. ([nova-gorica.si](http://nova-gorica.si))

The bus regularly loops through central stops, making it ideal for reaching Europe Square comfortably.

How to Proceed:

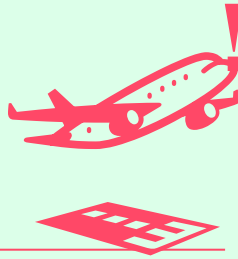
1. Walk or start from City Hall and head to the nearest bus stop served by Nomago's free city bus line.
  2. Catch the free city bus, and ride toward the city center. Ask the driver or check onboard displays to ensure you disembark at the stop closest to Trg Evrope.
- ! Alternatively, if you're there on a Friday or Saturday between May and September, hop on the Hop-On/Hop-Off tourist bus—it's a great way to see multiple attractions, including Europe Square.

# 2. TRANSPORTATION OPTIONS

## BY PLANE

### CLOSEST AIRPORTS

Letališče Jožeta Pučnika, Brnik, Slovenia  
Trieste Airport, Italy  
Zagreb Airport, Croatia  
Venice (Marco Polo, Treviso), Italy



### SHUTTLE SERVICES

[Mivax](#)

[GoOpti](#)

[Nomago](#)



### TAXI/RIDESHARE OPTIONS

Taksi-Go +386 (0)41 617 910  
[Novotel](#) +386 (0)41 708 420

! Trieste Airport, in addition to being an interchange hub between air connections, rail and car services, can also be used as an interchange parking lot, so from whichever direction you are arriving, we recommend that you leave your car at the Trieste Airport parking lot and use the new frequency bus connection between Trieste Airport and Gorizia to get to the city!

## BY CAR

### TRAVELLING FROM SLOVENIA?

Nova Gorica is accessible via the **A1** motorway.

### TRAVELLING FROM ITALY?

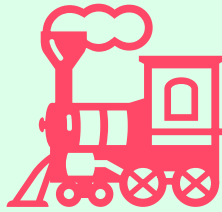
Gorizia is accessible via the **A4** motorway.



## BY TRAIN/BUS

### NEAREST STATIONS

- Gorizia Main train station
- Nova Gorica train Station
- Gorizia bus station
- Nova Gorica bus station



From February 8th, there are two daily urban cross-border local public transport service lines connecting the cities of Gorizia and Nova Gorica and an extra-urban cross-border LPT service line connecting the cities of Gorizia and Nova Gorica and Trieste Airport. Trieste Airport is an intermodal hub where, in addition to air services, it is possible to interchange with rail services and the motorway connecting with the rest of the regional territory and with the rest of Italy. Here, it is also possible to park the car and continue the journey by public transport in a sustainable way.

1. line between **Gorizia** (train station) and **Nova Gorica** (bus station), run by TPL FVG/APT GORIZIA daily with the following times and departures:

from the bus station stop in **Nova Gorica**  
from **07:30** until **00:30**, every **30** minutes

from the train station in **Gorizia**  
from **07:30** until **00:30**, every **30** minutes

2. circular line: **Gorizia** (train station)—**Nova Gorica** (train station)—**Solkan**—**Šempeter pri Gorici**—**Gorizia**, run by Nomago daily with the following times and departures:

from the train station in **Gorizia**  
from **08:15** until **16:45**, every **30** minutes

from the train station in **Nova Gorica**  
from **08:27** until **16:57**, every **30** minutes



### CROSS-BORDER SUBURBAN LINE

The suburban line directly connects the **Trieste Airport hub** with the cities of **Gorizia** and **Nova Gorica**, ensuring daily connections from April 4th, 2025. (It stops at the train station in Gorizia and at the train station and the bus station in Nova Gorica.)

Since April 4th, a suburban connection between **Gorizia** and **Cormons**, the heart of the Collio Goriziano, has also been operating with daily runs until late in the evening.

Schedules for all the aforementioned lines and more information are all available here:

[go2025.eu / how to reach us](https://go2025.eu/how-to-reach-us) (PDF)

# 3. HOTEL ACCOMMODA TIONS

- [Perla, Resort & Entertainment](#)
- [Park, Hotel & Entertainment](#)
- [Sabotin, Hotel & Restaurant](#)
- [Lipa, Hotel & Bistro](#)
- [DAM Boutique hotel & Restaurant](#)

# 4. EMERGE NCY CONTACTS

## AMBULANCE

112

General Hospital  
Nova Gorica (Emergency) +386 (0)5 330 1117

## POLICE

113

Police station Nova Gorica +386 (0)5 303 4400

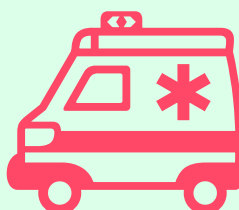
# 5. RECO MMENDED ACTIVITIES & LOCATIONS

## HAPPENINGS (CONCERTS, EXHIBITIONS, ETC.)

[go2025.eu / events](http://go2025.eu/events)

## VENUES (MUSEUMS, SITES, ETC)

[go2025.eu / what to see](http://go2025.eu/what-to-see)



# 6. REGISTRATION

ALL PARTICIPANTS ATTENDING THE SYMPOSIUM SHOULD REGISTER



<https://czk.si/reclaiming-hope-symposium-registration-form/>

Registration daily during the symposium at  
EPICenter registration desk from 8:30 onwards

# 7. CONTACT 4 LOGISTICS SUPPORT



CONTACT FOR TRANSPORT-RELATED QUESTIONS

**Maja Dobnik**  
**Simon Gmajner**

[maja.dobnik@mao.si](mailto:maja.dobnik@mao.si)  
[simon.streljaj-gmajner@mao.si](mailto:simon.streljaj-gmajner@mao.si)



CENTER ZA  
KREATIVNOST  
CENTRE FOR  
CREATIVITY



Sofinancira  
Evropska unija



REPUBLIKA SLOVENIJA  
MINISTRSTVO ZA KULTURO



The programme is supported by the European Union through the European  
Regional Development Fund and by the Republic of Slovenia. [www.czk.si](http://www.czk.si)

GO! 2025  
NOVA GORICA  
GORIZIA



Tomas Batia University in Zlin  
Faculty of Multimedia Communications

